

## MFC Endeavor Monogram Guidebook

The source of inspiration for MFC Endeavor Monogram is an alphabet set from the book, "Monograms and Alphabets for Combination" by Dollfus Mieg & Cie, first published in the 1890's.

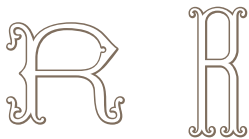
MFC Endeavor Monogram utilizes OpenType features that enable you to create more complex monograms, so what began originally as two sets of 26 roman letters grew to an astounding 734+ character font in order to create a unique interwoven monogram effect!

If you would like to learn more about traditional monogram formatting and rules, please feel free to visit our website and download our tutorial PDF, "Rules of Traditional Monogramming Explained" at <http://www.monogramfonts.com/MonogramRules.pdf>

### MFC Endeavor Monogram Basic Styles

MFC Endeavor Monogram supports one, two, or three letter monograms by interchanging the wide stumped Capitals and the tall narrow Capitals (in the lowercase positions) together. (NOTE: the OpenType Ligature feature should be turned off to properly mix cases.)

One letter monograms



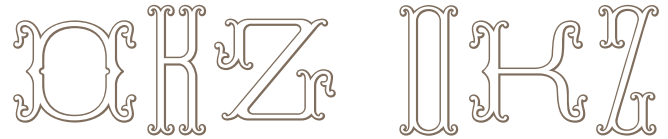
Type any capital letter  
or lowercase letter

Two letter monograms



Type any two capital  
or lowercase letters

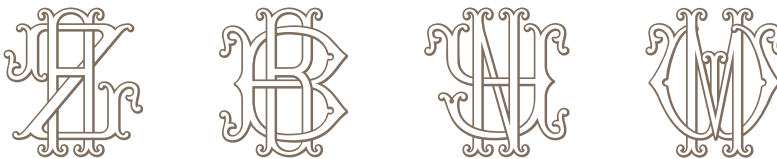
Three letter monograms



Type any CAP-lowercase-CAP, or lowercase-CAP-  
lowercase combination of letters

### MFC Endeavor Monogram Unique Interwoven Format

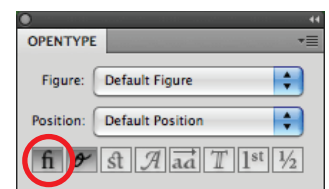
MFC Endeavor Monogram is also capable of a unique, two letter interwoven monogram style. This intertwined monogram requires the Ligature feature, available in most OpenType savvy applications, such as Adobe Illustrator CS (see Fig. 1). Just type any lowercase letter followed immediately by a Capital letter and the combined monogram will appear. (NOTE: some letterforms are modified to create proper intertwined monograms)



Type any lowercase letter followed immediately  
by a Capital letter (with the Ligatures feature enabled)

Figure 1

OpenType features are enabled by selecting the various buttons found in the OpenType Palette. Here, the enabled Ligature option has been circled.



### MFC Endeavor Monogram Chromatic Effects

The MFC Endeavor Monogram family includes 4 additional fonts that can be combined to create exciting chromatic effects! These fonts include, MFC Endeavor Monogram One, MFC Endeavor Monogram Two, MFC Endeavor Monogram Solid, and MFC Endeavor Monogram Stencil. Each font can be overlayed individually or in combinations with the base font, colored separately, or shifted slightly for shadow effects. These techniques can be applied to any of the monogram styles above.

continued on next page...

## MFC Endeavor Monogram Chromatic Effects continued

MFC Endeavor Monogram Regular					Base font
MFC Endeavor Monogram One		no lowercase			Solid interior contours of <b>only the uppercase</b> glyphs, including the interwoven glyphs
MFC Endeavor Monogram Two	no uppercase				Solid interior contours of <b>only the lowercase</b> glyphs, including the interwoven glyphs
MFC Endeavor Monogram Stencil					Solid interior contours of <b>all the glyphs</b> , including the interwoven glyphs; this font can also be used stand alone
MFC Endeavor Monogram Solid					All the interior contours removed, including the interwoven glyphs; this font can also be used stand alone

### How to Apply Color

To apply color, simply type your monogram using the Regular font, then copy and paste the monogram in another layer and change to the MFC Endeavor One font. Repeat this step, and this time change to the MFC Endeavor Two font. Now that you have three separate layers you can color and organize them. Order the layers so that the Regular layer is on top, with layers One and Two beneath it. Move these layers until they line up correctly. You may have to zoom in to get the registration right. To add a shadow, copy the monogram to another layer and switch to MFC Endeavor Solid, select a color and make sure it is the bottom layer. Now shift the layer left or right, up or down to create the shadow effect.



Create your monogram using the Regular font



Copy and paste the monogram, switch to Endeavor One and change the color.



Again, paste the monogram, switch to Endeavor Two and change the color.



Again, paste the monogram, switch to Endeavor Solid and change the color.



Stack and align the layers, with the Regular layer on top and the Solid layer on the bottom

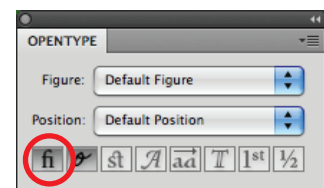


The colorizing method works on the interwoven monograms too!



### Making Intertwined Monograms

To create intertwined monograms, enable the Ligatures feature and type any lowercase letter followed immediately by a Capital letter



For single color monograms, delete the MFC Endeavor Two layer and switch the MFC Endeavor One Layer to MFC Endeavor Stencil