

## MFC Baelon Monogram Guidebook

The source of inspiration for Baelon Monogram is an alphabet set from the book, "Monograms and Alphabets for Combination" by Dollfus Miege & Cie, first published in the 1890's.

Baelon Monogram utilizes OpenType features that enable you to create more complex monograms, so what began originally as two sets of 26 roman letters grew to an astounding 734+ character font in order to create a unique interwoven monogram effect!

If you would like to learn more about traditional monogram formatting and rules, please feel free to visit our website and download our tutorial PDF, "Rules of Traditional Monogramming Explained" at <http://www.monogramfonts.com/MonogramRules.pdf>

### Baelon Monogram Basic Styles

Baelon Monogram supports one, two, or three letter monograms by interchanging the wide stumped Capitals and the tall narrow Capitals (in the lowercase positions) together. (NOTE: the OpenType Ligature feature should be turned off to properly mix cases.)

One letter monograms



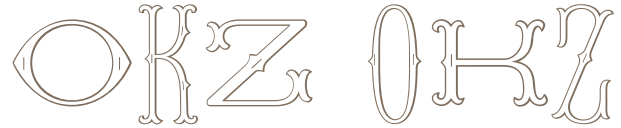
Type any capital letter  
or lowercase letter

Two letter monograms



Type any two capital  
or lowercase letters

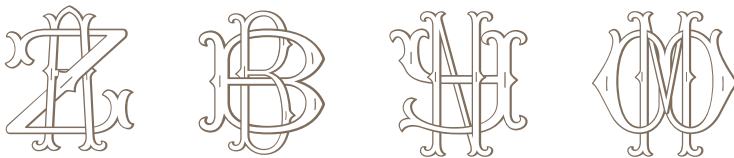
Three letter monograms



Type any CAP-lowercase-CAP, or lowercase-CAP-  
lowercase combination of letters

### Baelon Monogram Unique Interwoven Format

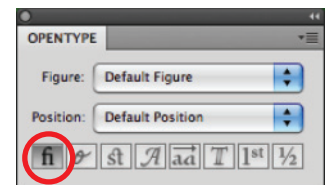
Baelon Monogram is also capable of a unique, two letter interwoven monogram style. This intertwined monogram requires the Ligature feature, available in most OpenType savvy applications, such as Adobe Illustrator CS (see Fig. 1). Just type any lowercase letter followed immediately by a Capital letter and the combined monogram will appear. (NOTE: some letterforms are modified to create proper intertwined monograms)



Type any lowercase letter followed immediately  
by a Capital letter (with the Ligatures feature enabled)

Figure 1

OpenType features are enabled by selecting the various buttons found in the OpenType Palette. Here, the enabled Ligature option has been circled.



### Baelon Monogram Titling and Stylistic Alternates

Baelon Monogram can also be used as a titling font when typed as all Capitals or all Lowercase. There are also a handful of alternate letters that can be accessed via the OpenType palette in OpenType savvy applications such as Adobe Illustrator CS (see Fig. 2).

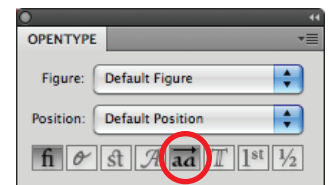
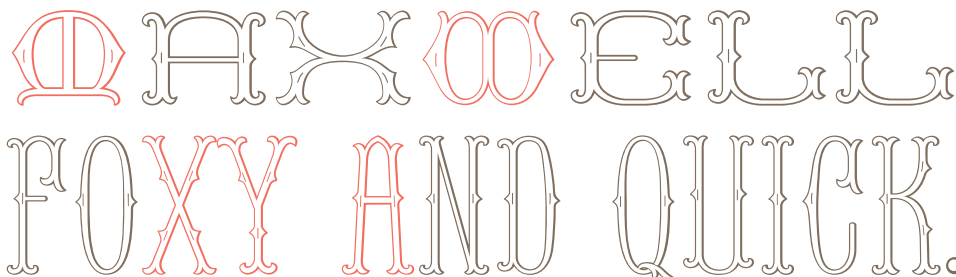


Figure 2  
The enabled Stylistic Alternates option has been circled.

## MFC Baelon Monogram Guidebook Chromatic Effects

The MFC Baelon Monogram family includes 4 additional fonts that can be combined to create exciting chromatic effects! These fonts include, Baelon Monogram One, Baelon Monogram Two, Baelon Monogram Solid, and Baelon Monogram Stencil. Each font can be overlaid individually or in combinations with the base font, colored separately, or shifted slightly for shadow effects. These techniques can be applied to any of the monogram styles on the previous page.

Baelon Monogram Regular	ABC	ABC	BB	DD	FF	Base font
Baelon Monogram One	ABC	no lowercase	B	D	F	Solid interior contours of <b>only the uppercase</b> glyphs, including the interwoven glyphs
Baelon Monogram Two	no uppercase	ABC	A	C	E	Solid interior contours of <b>only the lowercase</b> glyphs, including the interwoven glyphs
Baelon Monogram Stencil	ABC	ABC	BB	DD	FF	Solid interior contours of <b>all the glyphs</b> , including the interwoven glyphs; this font can also be used stand alone
Baelon Monogram Solid	ABC	ABC	BB	DD	FF	All the interior contours removed, including the interwoven glyphs; this font can also be used stand alone

### How to Apply Color

To apply color, simply type your monogram using the Regular font, then copy and paste the monogram in another layer and change to the Baelon One font. Repeat this step, and this time change to the Baelon Two font. Now that you have three separate layers you can color and organize them. Order the layers so that the Regular layer is on top, with layers One and Two beneath it. Move these layers until they line up correctly. You may have to zoom in to get the registration right. To add a shadow, copy the monogram to another layer and switch to Baelon Solid, select a color and make sure it is the bottom layer. Now shift the layer left or right, up or down to create the shadow effect.



Create your monogram using the Regular font



Copy and paste the monogram, switch to Baelon One and change the color.



Again, paste the monogram, switch to Baelon Two and change the color.



Again, paste the monogram, switch to Baelon Solid and change the color.



Stack and align the layers, with the Regular layer on top and the Solid layer on the bottom



The colorizing method works on the interwoven monograms too!



For single color monograms, delete the Baelon Two layer and switch the Baelon One Layer to Baelon Stencil

### Making Intertwined Monograms

To create intertwined monograms, enable the Ligatures feature and type any lowercase letter followed immediately by a Capital letter

