



MFC Ruse Monogram Guidebook

The inspiration source for Ruse Monogram is a unique letterset called "DeRoos Inline" from an old type specimen tearsheet. To create more monogram versatility in the design, a solid version, as well as a scaled down numbering set and flourish ornamentation was also added to the font. Ruse Monogram is capable of several traditional monogram forms, in both solid and inline styles.

If you would like to learn more about traditional monogram formatting and rules, please feel free to visit our website and download our tutorial PDF, "Rules of Traditional Monogramming Explained" at <http://www.monogramfonts.com/MonogramRules.pdf>

Ruse Monogram Styles

Ruse Monogram supports one, two and three letter monograms, as well as numbered monograms (allowing commemoration, memorial, and other styles of labeling).

One letter monogram



Type any Capital letter

Two letter monogram



Type any two Capital letters

Three letter monogram



Type any lowercase + Capital + lowercase

Numbered monogram



Type #'s + lowercase + Capital + lowercase + #'s

The solid version of Ruse Monogram requires the Stylistic Alternates feature, available in most OpenType savvy applications, such as Adobe Illustrator CS (see Fig. 1). You can enable Stylistic Alternates and type out a monogram or text, or you can highlight an already setup solid monogram or text and enable Stylistic Alternates to change it to the solid style.

Two letter monogram



Type any two Capital letters

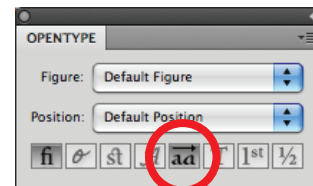
Three letter monogram



Type any lowercase + Capital + lowercase

Figure 1

The Stylistic Alternates option is selected here in the OpenType Palette...



If you want to create a more customized look, you can add any of a handful of elegant flourishes to surround your monogram setting.



Type out any of a variety of surrounding flourish forms to add flair and sophistication to your monograms, whether set in Inline or Solid style.

Below is a map of the various flourish enhancement characters available as part of Ruse Monogram.

