

The
**POWERSTATION
FONT
— FAMILY —
USER MANUAL**

AND GUIDE FOR

COMPLETE
8
FONTS

3
**COLOR
TYPESETTING**

MULTI-COLOR CAPABLE
4
LAYERABLE VERSIONS

SUPPLEMENT

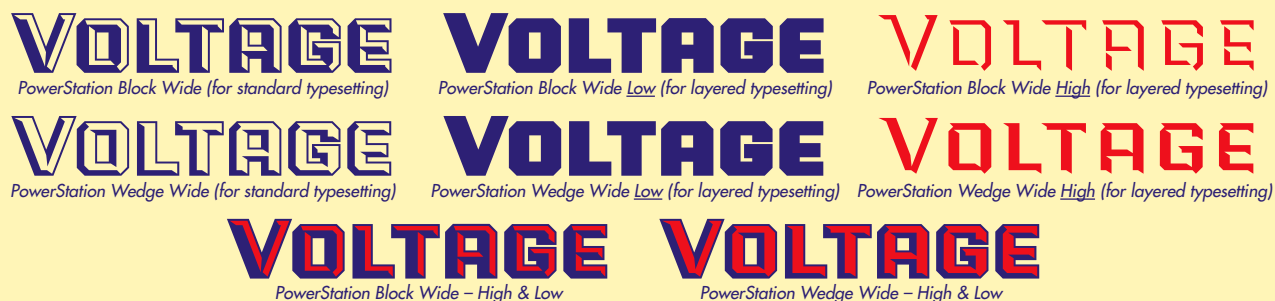
POWERSTATION - COLOR - TYPESETTING IN 4 EASY STEPS

PowerStation was conceived as a family of fonts that could graphically convey the feeling of dimensionality (the Solid and Outline versions notwithstanding!). This was achieved through the 2D versions of both "Block" and "Wedge", or through the layering of the "High" and "Low" fonts that were included in both those packages—through which one could actually create 2-color typesetting.

Recently I became aware that if one combined both the Block and Wedge versions of the font, one could actually achieve layered 3-color typesetting. I found the look of the type that was done this way to be totally unexpected. I'm not sure that 3-color typesetting done in this manner has ever been done before, and I am excited to share this new capability.

On Page 3 of this supplement are detailed instructions on how to achieve this effect. Below I've clarified some terms, outlined what's needed, and how 3-color typesetting is structured.

2-COLOR TYPESETTING



3-COLOR TYPESETTING



It should be pointed out that in order to set PowerStation in 3 colors you will need either the Complete PowerStation Family or, at the very least, both the Block and Wedge versions.

The example above uses the Wide version of PowerStation. Of course you can also use the regular version. Also, you needn't feel constrained to use colors like those above—the sky's the limit. Please go to Page 3 for detailed directions on how to set PowerStation in 3 colors.

POWERSTATION - 3 - - COLOR - TYPESETTING IN 4 EASY STEPS

If you've purchased both of the PowerStation faceted fonts – or the complete Powerstation Family – you now have the ability to set type in three colors. The "PowerStation Block" and "PowerStation Wedge" packages each contain two additional fonts: one called "PowerStation Block (or Wedge) High" and one called "PowerStation Block (or Wedge) Low". To set your type in two or three colors you don't use the basic "PowerStation Block (or Wedge)" fonts – those are for standard one-color typesetting. Instead use the High and Low fonts. To set PowerStation in just two colors please refer to the original PowerStation User Manual.

So here, in just 4 easy steps, is how to set PowerStation in three colors.

SETTING WORDS IN 3 COLORS WITH POWERSTATION'S LOW AND HIGH VERSIONS



Step1: You will need both PowerStation Block and Wege versions. Set your text in one of the the "Low" versions of PowerStation Block, (here PowerStation Block Wide Low). Select and copy the type to the clipboard.



Step2: Now pick a color for that "Low" version that's on-screen (or leave it black, if that's your preference). If you're in an application that supports layering, you can open two new layers for the next two steps.



Step3: Paste the type you had copied directly on top of the text from the previous two steps – or into a second layer over the first one. While the newly pasted copy is still selected, change its style to the "Wedge High" version of the font, and change the color. Here we've changed it to red.



Step4: Again paste the copy from the clipboard directly on top – or into the top layer over the other two. Change the style of the newly pasted copy to the Block High version of the font. Then change its color. Here we've changed the color to a yellow. Voila! You've now set copy in three colors.

PowerStation was originally designed with a 2-color layered typesetting capability. It was a happy accident that while experimenting with setting type in PowerStation that Mr. Anthony Noel hit upon the 3-color capability. But please don't feel limited to setting in three colors as set out in these instructions. Feel free to play and experiment, mixing and matching – you may be surprised by the results!